

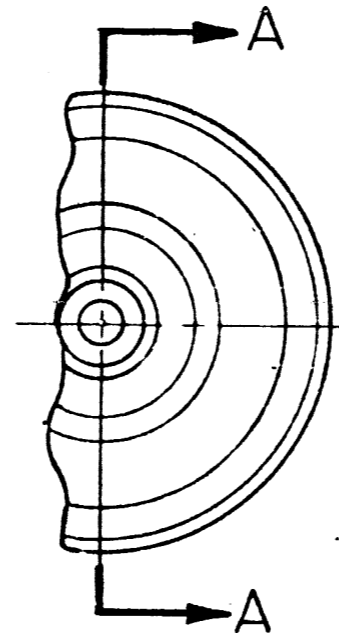
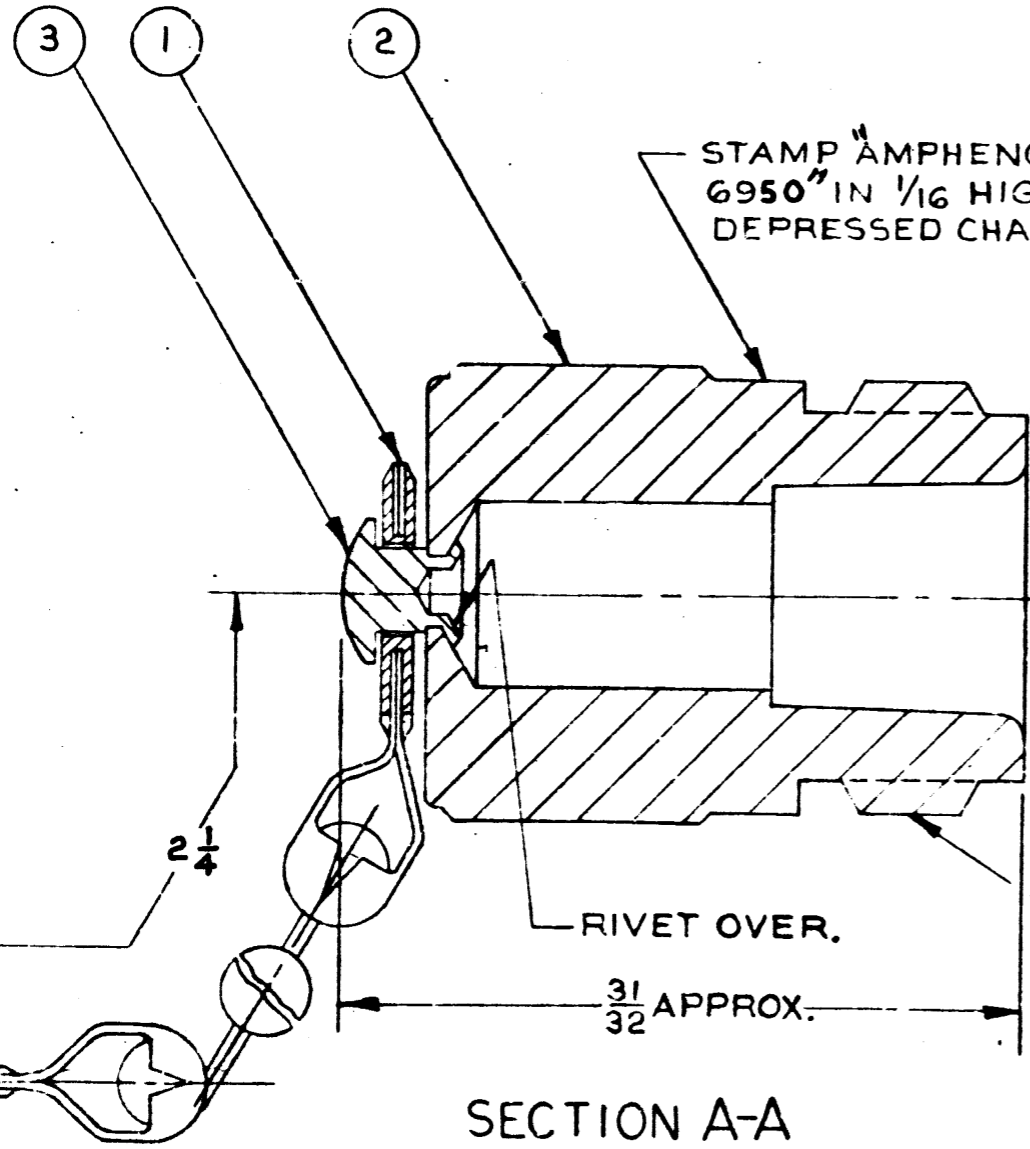
NOTICE: All drawings and specifications are, and remain our property, and must be returned to us. All specifications are confidential and are not to be disclosed to any persons other than those to whom they are sent. No drawings, specifications or other data belonging to us which may be furnished to vendors for production or quotation are to be regarded by implication or otherwise in any manner licensing the holder or any other person or corporation or conveying any rights or permission to manufacture, use or sell any patented design or product that may in any way be related thereto.

REMOVE ALL BURRS. BREAK CORNERS AND SHARP EDGES .005 MAXIMUM UNLESS OTHERWISE SPECIFIED

DO NOT SCALE THIS DRAWING

DRAWING NUMBER  
6950  
ISSUE  
J

| REVISIONS |     |   |         |       |        |
|-----------|-----|---|---------|-------|--------|
| ZONE      | SYM | DESCRIPTION   | DATE    | ECONO | APPR   |
|           | F   | REDRAWN ITEM I WAS 1504                             | 5-20-64 | 10533 | J R B. |
|           | G   | ADDED NOTE 2, ITEM I FINISH WAS NICKEL PER SPEC 676 | 7-15-66 | 12151 | S.P.   |
|           | H   | REVISED PKT.  | 1-16-75 | 22590 | ttb    |
|           | J   | ADDED NOTES 5 + 6                                   | 3/25/92 | 39167 | DR     |



NOTES: (CONT)  
 5. PLATING MUST CONFORM TO SPEC. 349-50560. ASTROPLATE (REF).  
 6. PACKAGE IN BAG 999-226.

NOTES:  
 1.  
 2.  
 3.  
 4.

| REQ | ITEM | PART NO | DESCRIPTION    | FINISH              |
|-----|------|---------|----------------|---------------------|
| 1   | 3    | 31-927G | SHOULDER RIVET | NOTE 5              |
| 1   | 2    | 6951 H  | BODY           | NOTE 5              |
| 1   | 1    | 6952    | CHAIN ASS'Y.   | NICKEL-0005<br>0004 |

LIST OF MATERIAL  
**AMPHENOL RE**  
 A DIVISION OF  
 AMPHENOL-BORG ELECTRONICS CORP.  
 GENERAL OFFICES  
 DANBURY, CONN.  
 PLANTS AT  
 CHICAGO 38, ILL. WOODSIDE 77, N.Y.  
 DANBURY, CONN.

|   |         |             |
|---|---------|-------------|
| UNLESS OTHERWISE SPECIFIED DIMENSIONS ARE IN INCHES |         |             |
| TOLERANCE ON FRACTIONS DECIMALS ANGLES              |         |             |
| ±1/64   | ±.005   | ±1°         |
| MATERIAL 11   |         |             |
| SPECIFICATION 11                                    |         |             |
| FINISH SEE LIST OF MATERIAL                         |         |             |
| NEXT ASSY   | USED ON | APPLICATION |

|  |                     |                                 |
|--|---------------------|---------------------------------|
| DRAWN BY<br>J.R.B.                     | DATE<br>5-20-64     | TITLE<br>TYPE "N" PLUG DUST CAP |
| CHECKED<br>ttb                         | DATE<br>5-21-64     |                                 |
| ENGINEER<br>Kopelinsky                 | DATE<br>5-22-64     |                                 |
| APPROVED<br>Wm3                        | DATE<br>5-22-64     |                                 |
| REFERENCE DRAWING NO<br>DQR. 51-300137 | CODE IDENTIFICATION | DRAWING SIZE<br>B               |
|  | DRAWING NO<br>6950  | ISSUE<br>J                      |
| SCALE 4-1                              | SHEET OF            |                                 |

OFFICIAL ENG. REL.  
 8584  
 5-20-63